



ROAD TRAUMA SUPPORT TEAM TASMANIA Newsletter 2008

This year we have provided counselling for more than 200 people affected by road trauma, some on multiple occasions. We have also provided assistance to many others by way of personal support during police interviews, court visits, the filling in of official paperwork connected with the accident and the like.

NEWS ANNOUNCEMENT *****

We have a new roomy office at the LGH located on level 2 behind the Lecture Theatre. Our sincere thanks to the CEO. Counselling appointments (not on the ward) will still be conducted in a separate room near the Emergency department. Same contact numbers and email address. info@roadtrauma.org.au. Ph (03) 6348 7252 or 0427 487 251 (24 hrs)

NEWS ANNOUNCEMENT*****

Visit www.roadtraumasupport.org.au to view our new look user-friendly website which will be regularly updated with news and information for assisting clients.

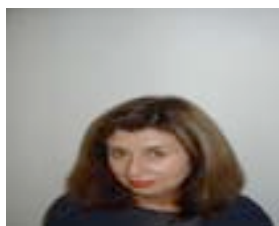


We extend our special thanks to **Kerry Finch MLC**, independent member for Rosevears, our patron, who has been "hands on" with active involvement. Kerry attended our AGM, and provided sound advice about current issues for the group. *At our annual memorial event in the Brisbane St Mall, Launceston on November 15, "Not Forgotten",* Kerry was once again not only a wonderful MC but provided and set up his sound system for us as he does annually. He is a great mentor for the cause! The service was very well received and the singing, music, readings and offering of symbols was very moving as was the circle of life.

In August at our AGM new office bearers were elected:

President: Robin Ikin

Vice President: Ted George



Treasurer: Graeme Lunson



Secretary: Bronwyn Parry



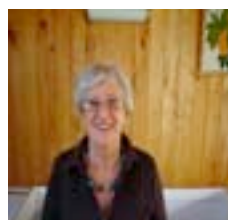
Our counsellors:



Pat Igoe, North



Shira Shilo, South



Andrea Dean, NW

What's the news?

We have expanded our service in Tasmania to include an on call counsellor along the Northwest Coast, as well as establishing closer ties with staff from the Northwest Regional Hospital at Burnie. and the Royal Hobart Hospital.

We have presented information sessions on a number of occasions this year to nursing and allied health staff at both the RHH and the NW Regional as professional development. We are hoping to include the Mersey in 2009. We have also established closer ties with Police and Emergency Services personnel.

Many people struggle on not knowing that our service is readily available which is why we have increased our presence in the community by participating in such events as Agfest where we not only distributed information about our service but made contact with a number of people who desperately need help due both to recent road trauma and in some cases unresolved trauma from the past

The following phone number can be called at anytime to arrange counselling support:
0427 487 251

Our website provides information on trauma and grief.

www.roadtraumasupport.org.au

We are extremely grateful to all of you who have supported us this year
We extend our compliments of the season, drive carefully.

Robin Ikin President RTST